

CYLINDERS - LOCK TRIM THICKNESS INDEX

6503 - Escutcheon	.25"	E
6504 - Escutcheon	.25"	E
6505 - Box Escutcheon	.875"	K
6508 - Escutcheon	.1875"	D
6511 - Escutcheon	.09"	B
6515 - Oval Edinburgh (Mort)	.5625"	I
6516 - Oval Edinburgh (Mort)	.5625"	I
6520 - Bristol (Mort)	.5625"	I
6526 - Kensington (Mort)	.5625"	I
6540 - San Diego	.09"	B
6541 - San Francisco	.125"	C
6542 - Tremont	.75"	J
6543 - Lancaster	.09"	B
6544 - Hamilton	.75"	J
6545 - Empire	.75"	J
6546 - Wilmington	.3125"	F
6547 - Nashville	.125"	C
6548 - Detroit	.25"	E
6549 - Williamsburg	.3125"	F
6549 - Williamsburg	.875"	K
6550 - Georgetown	.3125"	F
6550 - Georgetown	.875"	K
6551 - Reading	.1875"	D
6552 - Baltimore	.1875"	D
6554 - Barclay	.25"	E
6555 - Boston	.09"	B
6556 - Charleston	.09"	B
6557 - Richmond	.09"	B
6560 - Lexington	.3125"	F
6562 - New York	.25"	E
6563 - Chicago	.09"	B
6564 - Princeton	.09"	B
6565 - Monterey	.09"	B
6567 - Trenton	.1875"	D
6568 - Renssalaer	.09"	B
6570 - Atlanta	.435"	G
6571 - Concord	.25"	E
6572 - Plymouth	.09"	B
6573 - Springfield	.3125"	F
6641 - Pasadena	.435"	G
6642 - Escutcheon	.09"	B
6737 - Cylinder Collar	.25"	E
6752 - Cylinder Collar	.09"	B
6754 - Cylinder Collar	.3125"	F
6757 - Cylinder Collar	.3125"	F
6763 - Escutcheon	.09"	B
6765 - Escutcheon	.1875"	D
6767 - Escutcheon	.1875"	D
6768 - Cylinder Collar	.125"	C
6769 - Escutcheon	.09"	B
6769 - Escutcheon	.75"	J
6774 - Escutcheon	.09"	B

6790 - Escutcheon	.3125"	F
6791 - Escutcheon	.75"	J
6792 - Escutcheon	.75"	J
6793 - Escutcheon	.125"	C
6794 - Escutcheon	.25"	E
6795 - Escutcheon	.3125"	F
6797 - Escutcheon	.09"	B
6798 - Escutcheon	.3125"	F
6910 - Midtown	.25"	E
6922 - Lakewood	.125"	C
6924 - Vancouver	.09"	B
6927 - Montpelier	.09"	B
6931 - Dallas	.09"	B
6933 - Versailles	.125"	C
6935 - Republic	.75"	J
6937 - Charlotte	.3125"	F
6938 - Mobile	.125"	C
6939 - Bristol Lever Set	.25"	E
6940 - Denver	.09"	B
6942 - Bismark	.125"	C
6948 - Victoria	.1875"	D
6949 - Metropolitan	.25"	E
6950 - Kensington	.3125"	F
6951 - Stanford	.75"	J
6952 - Edinburgh	.435"	H
6961 - Westminster	.3125"	F
6962 - Fenwick	.435"	H
6963 - Bristol Handle Set	.435"	G
6966 - Lakeshore Handleset	.435"	G
6973 - Houston Entrance Set	.435"	H
6974 - Lakeshore Entrance	.435"	G
6975 - Escutcheon	.125"	C
6976 - Minneapolis	.375"	G
6979 - Escutcheon	.09"	B
6980 - Escutcheon	.125"	C
6986 - Escutcheon	.125"	C
6988 - Escutcheon	.09"	B
6990 - Escutcheon	.3125"	F
6991 - Escutcheon	.25"	E
6993 - Escutcheon	.125"	C
6996 - Escutcheon	.125"	C
6999 - Richland	.435"	H
8300 - Cylinder Collar	.1875"	D
8300 - Cylinder Collar	.25"	E
8300 - Cylinder Collar	.3125"	F

B - .0937" (2.4mm)

6511 - Escutcheon	6572 - Plymouth	6940 - Denver
6540 - San Diego	6642 - Escutcheon	6979 - Escutcheon
6543 - Lancaster	6752 - Cylinder Collar	6981 - Melbourne
6555 - Boston	6763 - Escutcheon	
6556 - Charleston	6769 - Escutcheon	
6557 - Richmond	6774 - Escutcheon	
6563 - Chicago	6797 - Escutcheon	
6564 - Princeton	6924 - Vancouver	
6565 - Monterey	6927 - Montpelier	
6568 - Renssalaer	6931 - Dallas	

C - .125" (3mm)

6541 - San Francisco	6922 - Lakewood	6980 - Escutcheon
6547 - Nashville	6933 - Versailles	6986 - Escutcheon
6768 - Cylinder Collar	6938 - Mobile	6993 - Escutcheon
6793 - Escutcheon	6942 - Bismark	6996 - Escutcheon
	6975 - Escutcheon	

D - .1875" (5mm)

6508 - Escutcheon	6567 - Trenton	6948 - Victoria
6551 - Reading	6765 - Escutcheon	8300 - Cylinder Collar (1/8" Adj.)
6552 - Baltimore	6767 - Escutcheon	

E - .25" (6mm)

6503 - Escutcheon	6571 - Concord	6991 - Escutcheon
6504 - Escutcheon	6737 - Cylinder Collar	8300 - Cylinder Collar (1/16" Adj.)
6548 - Detroit	6794 - Escutcheon	
6554 - Barclay	6910 - Midtown	
6562 - New York	6939 - Bristol Lever Set	
	6949 - Metropolitan	

F - .3125" (8mm)

6546 - Wilmington	6754 - Cylinder Collar	6950 - Kensington
6549 - Williamsburg (Sgl Cyl)	6757 - Cylinder Collar	6961 - Westminster
6550 - Georgetown (Sgl Cyl)	6790 - Escutcheon	6990 - Escutcheon
6560 - Lexington	6795 - Escutcheon	8300 - Cylinder Collar (No Adj.)
6573 - Springfield	6798 - Escutcheon	
	6937 - Charlotte	

G - .375" (10mm)

6570 - Atlanta	6641 - Pasadena	6966 - Lakeshore Handleset
	6963 - Bristol Handle Set	6974 - Lakeshore Entrance Set
		6976 - Minneapolis

H - .435" (11mm)

6952 - Edinburgh	6973 - Houton Entrance Set
6962 - Fenwick	6999 - Richland

I - .5625" (14mm)

6515 - Oval Edinburgh (Mortise)	6516 - Oval Edinburgh (Mortise)
6520 - Bristol (Mortise)	6526 - Kensington (Mortise)

J - .75" (18mm)

6544 - Hamilton	6935 - Republic
6542 - Tremont	6951 - Stanford
6545 - Empire	6769 - Escutcheon

K - .875" (22mm)

6505 - Box Escutcheon (Dbl. Cyl. Only)	6549 - Williamsburg (Dbl. Cyl. Only)	6550 - Georgetown (Dbl. Cyl. Only)
--	--------------------------------------	------------------------------------

DECIMAL FRACTION CHART

FRACTION	DECIMAL
1/16"	.0625"
1/8"	.125"
3/16"	.1875"
1/4"	.25"
5/16"	.3125"
3/8"	.375"
7/16"	.4375"
1/2"	.5"
9/16"	.5625"
5/8"	.625"
11/16"	.6875"
3/4"	.75"
13/16"	.8125"
7/8"	.875"

CYLINDERS – C KEYWAY TABLE

SINGLE CYLINDER

Item #	Description	030, 031, 033 038, 040, 050 060, 102, 112 003 150, 151, 152 055 190, 260, 264 056		
8321.xxx	1" Mortise Cyl.			
8322.xxx	1.125" Mortise Cyl.			
8323.xxx	1.25" Mortise Cyl.	\$43	46	
8324.xxx	1.375" Mortise Cyl.			
8325.xxx	1.5" Mortise Cyl.			
8326.xxx	1.625" Mortise Cyl.			
8327.xxx	1.75" Mortise Cyl.			
8328.xxx	2" Mortise Cyl.	\$103	108	
8329.xxx	2.25" Mortise Cyl.			
8330.xxx	2.5" Mortise Cyl.			

Cylinders NOT available in Distressed finishes, non-distressed equalavalents 402=102, 412=112, 452=152



SINGLE CYLINDER – C KEYWAY

Door Thickness:	1.375"		1.75"		2"		2.25"		2.5"	
Lock Trim Thickness	Cylinder Length	Blocking Ring	Cylinder Length	Blocking Ring	Cylinder Length	Blocking Ring	Cylinder Length	Blocking Ring	Cylinder Length	Blocking Ring
A – .0625"	1" 8321.xxx	.1875" 8440.xxx.5	1" 8321.xxx	—	1.125" 8322.xxx	—	1.25" 8323.xxx	—	1.375" 8324.xxx	—
B – .0937"	1" 8321.xxx	.1562" 8440.xxx.4	1" 8321.xxx	—	1.125" 8322.xxx	—	1.25" 8323.xxx	—	1.375" 8324.xxx	—
C – .125"	1" 8321.xxx	.125" 8440.xxx.3	1.125" 8322.xxx	—	1.125" 8322.xxx	—	1.25" 8323.xxx	—	1.375" 8324.xxx	—
D – .1875"	1" 8321.xxx	—	1.125" 8322.xxx	—	1.25" 8323.xxx	—	1.375" 8324.xxx	—	1.5" 8325.xxx	—
E – .25"	1" 8321.xxx	—	1.25" 8323.xxx	—	1.25" 8323.xxx	—	1.375" 8324.xxx	—	1.5" 8325.xxx	—
F – .3125"	1.125" 8322.xxx	—	1.25" 8323.xxx	—	1.375" 8324.xxx	—	1.5" 8325.xxx	—	1.625" 8326.xxx	—
G – .375"	1.125" 8322.xxx	—	1.25" 8323.xxx	—	1.375" 8324.xxx	—	1.5" 8325.xxx	—	1.625" 8326.xxx	—
H – .435"	1.125" 8322.xxx	—	1.375" 8324.xxx	—	1.5" 8325.xxx	—	1.625" 8326.xxx	—	1.75" 8327.xxx	—
I – .5625"	1.125" 8322.xxx	—	1.5" 8325.xxx	—	1.625" 8326.xxx	—	1.75" 8327.xxx	—	2" 8328.xxx	—
J – .75"	1.5" 8325.xxx	—	1.625" 8326.xxx	—	1.75" 8327.xxx	—	2" 8328.xxx	.125" 8440.xxx.3	2" 8328.xxx	—

DOUBLE CYLINDER

Item #	Description	030, 031, 033 038, 040, 050 060, 102, 112 003 150, 151, 152 055 190, 260, 264 056		
8321.xxx.DBL	1" Double Cyl.			
8322.xxx.DBL	1.125" Double Cyl.			
8323.xxx.DBL	1.25" Double Cyl.	\$88	92	
8324.xxx.DBL	1.375" Double Cyl.			
8325.xxx.DBL	1.5" Double Cyl.			
8326.xxx.DBL	1.625" Mortise Cyl.			
8327.xxx.DBL	1.75" Mortise Cyl.			
8328.xxx.DBL	2" Mortise Cyl.	\$206	215	
8329.xxx.DBL	2.25" Mortise Cyl.			
8330.xxx.DBL	2.5" Mortise Cyl.			

Cylinders NOT available in Distressed finishes, non-distressed equalavalents 402=102, 412=112, 452=152

DOUBLE CYLINDER – C KEYWAY

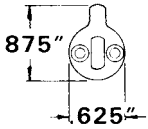
Door Thickness:	1.375"		1.75"		2"		2.25"		2.5"	
Lock Trim Thickness	Cylinder Length	Blocking Ring	Cylinder Length	Blocking Ring	Cylinder Length	Blocking Ring	Cylinder Length	Blocking Ring	Cylinder Length	Blocking Ring
A – .0625"	1" 8321.xxx.DBL	.2812" + 8440.xxx.7	1" 8321.xxx.DBL	.1875" 8440.xxx.5	1" 8321.xxx.DBL	—	1.125" 8322.xxx.DBL	—	1.25" 8323.xxx.DBL	—
B – .0937"	1" 8321.xxx.DBL	.25" + 8440.xxx.6	1" 8321.xxx.DBL	.125" 8440.xxx.3	1.125" 8322.xxx.DBL	.0625" 8440.xxx.1	1.25" 8323.xxx.DBL	.0625" 8440.xxx.1	1.375" 8324.xxx.DBL	.0625" 8440.xxx.1
C – .125"	1" 8321.xxx.DBL	.2187" + 8440.xxx.6	1" 8321.xxx.DBL	.0625" 8440.xxx.1	1.125" 8322.xxx.DBL	.0625" 8440.xxx.1	1.25" 8323.xxx.DBL	.0625" 8440.xxx.1	1.375" 8324.xxx.DBL	.0625" 8440.xxx.1
D – .1875"	1" 8321.xxx.DBL	.1526" + 8440.xxx.4	1.125" 8322.xxx.DBL	.093" + 8440.xxx.2	1.125" 8322.xxx.DBL	—	1.25" 8323.xxx.DBL	—	1.375" 8324.xxx.DBL	—
E – .25"	1" 8321.xxx.DBL	.1875" 8440.xxx.5	1.125" 8322.xxx.DBL	.0625" 8440.xxx.1	1.25" 8323.xxx.DBL	.0625" 8440.xxx.1	1.375" 8324.xxx.DBL	.0625" 8440.xxx.1	1.5" 8325.xxx.DBL	.0625" 8440.xxx.1
F – .3125"	1" 8321.xxx.DBL	.0625" 8440.xxx.1	1.25" 8323.xxx.DBL	.093" + 8440.xxx.2	1.25" 8323.xxx.DBL	—	1.375" 8324.xxx.DBL	—	1.5" 8325.xxx.DBL	—
G – .375"	1" 8321.xxx.DBL	—	1.25" 8323.xxx.DBL	.0625" 8440.xxx.1	1.375" 8324.xxx.DBL	.0625" 8440.xxx.1	1.5" 8325.xxx.DBL	.0625" 8440.xxx.1	1.625" 8326.xxx.DBL	.0625" 8440.xxx.1
H – .435"	1.125" 8322.xxx.DBL	.0625" 8440.xxx.1	1.25" 8323.xxx.DBL	—	1.5" 8325.xxx.DBL	.0625" + 8440.xxx.1	1.5" 8325.xxx.DBL	—	1.625" 8326.xxx.DBL	—
I – .5625"	1.125" 8322.xxx.DBL	.0937" + 8440.xxx.2	1.5" 8325.xxx.DBL	.0625" 8440.xxx.1	1.5" 8325.xxx.DBL	.0625" 8440.xxx.1	1.625" 8326.xxx.DBL	.156" + 8440.xxx.4	2" 8328.xxx.DBL	.0625" 8440.xxx.1
J – Exterior .435"	1" 8321.xxx.DBL	—	1.125" 8322.xxx.DBL	—	1.25" 8323.xxx.DBL	—	1.375" 8324.xxx.DBL	—	1.5" 8325.xxx.DBL	—
J – Interior .75"	1.5" 8325.xxx.DBL	—	1.75" 8327.xxx.DBL	—	2" 8328.xxx.DBL	.125" 8440.xxx.3	2" 8328.xxx.DBL	—	2.25" 8329.xxx.DBL	.125" 8440.xxx.3

+ Two Blocking Rings Required

BLOCKING RINGS

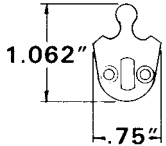
Item #	Description	030, 031, 033 038, 040, 050 060, 102, 112 003 150, 151, 152 055 190, 260, 264 056		
8440.xxx.001	.0625" – 1/16" B.R.			
8440.xxx.002	.0937" – 3/32" B.R.			
8440.xxx.003	.125" – 1/8" B.R.	\$11	14	
8440.xxx.004	.1562" – 5/32" B.R.			
8440.xxx.005	.1875" – 3/16" B.R.			
8440.xxx.006	.25" – 1/4" B.R.			

CYLINDERS – ACCESSORIES



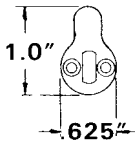
8300.509.AR – ADAMS RITE CAM

Thickness: .0625" (2mm)
For Adams Rite Series 1800,
4093, 4500.



8300.509.EMHT – EMHART CAM

Thickness: .0625" (2mm)
For use with Emhart Mortise type locks.



8300.509.STD – STANDARD CAM

Thickness: .0625" (2mm)
For use with most manufacturers of
Mortise type locks.



TAILPIECE BARS FOR RIM CYLINDERS

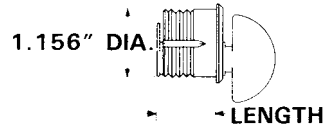
Horizontal
8313.329.TPH1 – 2.2188" (56mm)
8313.329.TPH2 – 3.1875" (81mm)

Item #	Function	Finish	Price
Cams for Mortise Cylinders			
8300.009.0065	5-pin Cylinder Spring Covers	009	\$24
8300.009.0066	6-pin Cylinder Spring Covers	009	23
8300.109.005	Cylinder Springs	109	24
8300.509.AR	Adams Rite Cam	009	24
8300.509.EMHT	Emhart Cam	009	5
8300.509.STD	Standard Cam	009	5
8313.329.TPH1	Rim Cylinder Tailpiece – 2.2188" (56mm)		5
8313.329.TPH2	Rim Cylinder Tailpiece – 3.1875" (81mm)		6

Residential Trim Marking Template

8498.000	Residential trim marking template – 2.75" doors		\$52
----------	---	--	------

Item #	Description	030, 031, 033 038, 040, 050	
		060, 102, 112 150, 151, 190 260, 264	003, 055 056, 402 412, 452
8441.xxx	1" Turn Knob Cylinder		
8442.xxx	1.125" Turn Knob Cylinder		
8443.xxx	1.25" Turn Knob Cylinder	\$100	105
8444.xxx	1.625" Turn Knob Cylinder		



8440 SERIES – MORTISE LOCK TURN PIECE CYLINDERS

Features: Used for specific conditions when operation by turn piece is required in place of a key. Available only with 6720 T-knob attached. Not handed.



8498.000 – RESIDENTIAL TRIM MARKING TEMPLATE

Features: To eliminate face drilling errors with Residential Trim shown in this section, Baldwin offers an economical metal template to ensure precision hole alignment. The template is designed to easily slide over a 1.75" (44mm) door and engages into the mortise cutout. The hole positions mark the center of the specific bore locations. Before marking hole positions, ALWAYS check to verify that metal template is square to mortise cutout. Mark hole locations accordingly and remove template.

CYLINDERS – CYLINDER TRIM



CYLINDER NOT INCLUDED

6737.xxx – Square Collar
2.5" x 2.5"
(64 x 64mm)



CYLINDER NOT INCLUDED

6738, 6738S*.xxx – Round Collar



CYLINDER NOT INCLUDED

6739.xxx – Lakeshore Collar



CYLINDER NOT INCLUDED

6743, 6743S*.xxx – Contemporary Square



CYLINDER NOT INCLUDED

6752.xxx
2.065" x 3.545"
(52 x 90mm)



CYLINDER NOT INCLUDED

6754.xxx
1.687" x 3"
(43 x 76mm)

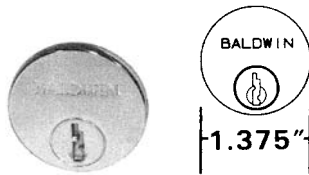


CYLINDER NOT INCLUDED

6755.xxx
1.625" x 2.375"
(41 x 60mm)
NOTE: Prepared to fit
Baldwin mortise or trim cylinders only.



6757.xxx
1.75"
(44mm) dia.



6761.xxx – Dummy Cylinder
For use with escutcheons and sectional trim
for symmetrical appearance on pairs of doors.



6768.xxx
1.75"
(44mm) dia.



8314.xxx – Standard Rim Cylinder Collar
Diameter: 1.945" (49mm)
Thickness: .030 (.8mm)
Adjustment Range: None

Item #	Description	030, 031, 033 038, 040, 050 060, 102, 112 150, 151, 190 260, 264	003, 055 056, 402 412, 452
6737.xxx	Square Cylinder Collar		
6738.xxx	Contemporary Round Collar		
6738S.xxx*	Contemporary Round Stainless*		
6739.xxx	Lakeshore Cylinder Collar		
6743.xxx	Contemporary Square Collar		
6743S.xxx*	Contemporary Square Stainless*	\$41	46
6752.xxx	Cylinder Collar		
6754.xxx	Oval Cylinder Collar		
6757.xxx	Colonial Cylinder Collar		
6761.xxx	Dummy Cylinder		
6768.xxx	Beaded Cylinder Collar		
6755.xxx	Cylinder Lock Cover Plate	85	98
6755.xxx.001	1/16" Blocking Ring – 6755 only (040 finish only)		8
6755.xxx.002	3/32" Blocking Ring – 6755 only (040 finish only)		8
6755.xxx.003	1/8" Blocking Ring – 6755 only (040 finish only)		8
8300.xxx	Compression Cylinder Collar**	15	18*
8314.xxx	Wrought Cylinder Collar	12	14

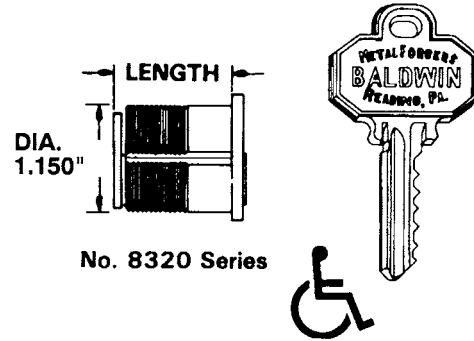
*Stainless Steel collars available in 102, 112, 151, 320 & 324
**8314 Wrought Cylinder Collar NOT available in Distressed finishes

CYLINDERS – MORTISE CYLINDER SPECIFICATIONS

MORTISE LOCK CYLINDERS

Length of Mortise Cylinders: The length of a Baldwin cylinder is the measurement from the back edge of the cylinder cap to the outer surface of the cam as illustrated.

Item Number			Cylinder Length
C(03) Keyway	E(05) Keyway	F(06) Keyway	
8321	8341	8361	1" (25mm)
8322	8342	8362	1.125" (29mm)
8323	8343	8363	1.25" (32mm)
8324	8344	8364	1.375" (35mm)
8325	8345	8365	1.5" (38mm)
8326	—	—	1.625" (41mm)
8327	—	—	1.75" (44mm)
8328	—	—	2" (51mm)
8329	—	—	2.25" (57mm)
8330	—	—	2.5" (64mm)



Features: Baldwin 6 pin (5 pin for 1" [25mm]) precision mortise cylinders are made of solid extruded brass. Finish is applied to cap only. When ordered separately, cylinders are supplied with 2 nickel silver keys. Cam 8300.509.STD is furnished. Cams illustrated on page K/10 can be ordered at additional charge. Cylinder lengths greater than 1.5" (38mm) are not available for E(05) and F(06) keyway Cylinders.

Keying Requirements: Available in a multitude of keying arrangements including Master, Grand Master and Construction Keying Levels.

Ordering Instructions: Standard Mortise Cylinder: Specify item number and finish.

Hotel Mortise Cylinder: Specify item number, finish with suffix "H". Cylinder price includes all MK charges and standard key bow. Cylinder is available with 6 pin keying only.

No. 1 – 8320.XXX.003 – Series cylinder plug. Specify length required and either US4 or 26D finish.

No. 2 – 8300.509.STD – Cylinder Cam Standard

No. 3 – 8300.509.004 – Mounting Screws for cam

No. 4 – 8300.109.005 – Tumbler Springs

No. 5 – 8300.009.0065 – Spring Covers (5 pin)

8300.009.0066 – Spring Covers (6 pin)

No. 6 – 8320.009.101 – Top Pins (For Bottom Pins #0–#3)

8320.009.102 – Top Pins (For Bottom Pins #4–#6)

8320.009.103 – Top Pins (For Bottom Pins #7–#9)

No. 7 – 8320.009.202 #2 Master Pins - .0295 (0.749mm)

8320.009.203 #3 Master Pins - .0445 (1.130mm)

8320.009.204 #4 Master Pins - .0595 (1.511mm)

8320.009.205 #5 Master Pins - .0745 (1.892mm)

8320.009.206 #6 Master Pins - .0895 (2.273mm)

8320.009.207 #7 Master Pins - .1045 (2.654mm)

8320.009.208 #8 Master Pins - .1195 (3.035mm)

8320.009.209 #9 Master Pins - .1345 (3.416mm)

8320.152.305 #5 Bottom Pins - .2405 (6.109mm)

8320.152.306 #6 Bottom Pins - .2555 (6.489mm)

8320.152.307 #7 Bottom Pins - .2705 (6.871mm)

8320.152.308 #8 Bottom Pins - .2855 (7.252mm)

8320.152.309 #9 Bottom Pins - .3005 (7.633mm)

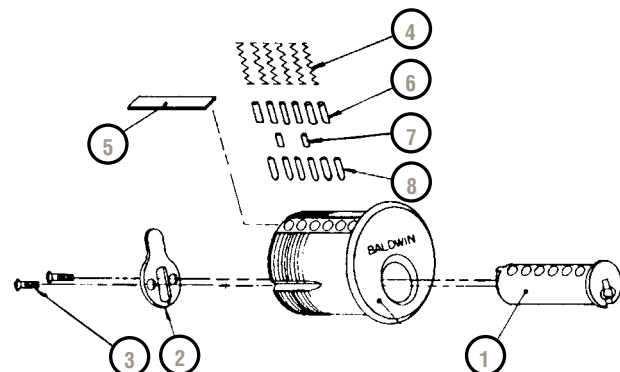
No. 8 – 8320.152.300 #0 Bottom Pins - .1655 (4.204mm)

8320.152.301 #1 Bottom Pins - .1805 (4.585mm)

8320.152.302 #2 Bottom Pins - .1955 (4.966mm)

8320.152.303 #3 Bottom Pins - .2105 (5.347mm)

8320.152.304 #4 Bottom Pins - .2255 (5.728mm)



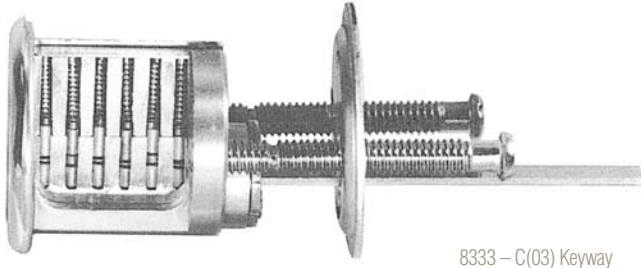
CYLINDERS – RIM CYLINDERS, FOR BALDWIN RIM LOCKS

Rim Cylinders

Item #	Function	Keyway	030, 031, 033 038, 040, 050 060, 102, 112 150, 151, 190 260, 264	003 055 056
8333.xxx	Rim Cylinder	C	\$66	71
8333.xxx.H	Rim Cylinder	C	93	98

Tailpiece Bars for Rim Cylinders

8313.329.TPH1	Rim cylinder tailpiece (regular – 2.22")	(329 finish only)	\$5
8313.329.TPH2	Rim cylinder tailpiece (long – 3.1875")	(329 finish only)	6



8333 – C(03) Keyway

RIM lock cylinders

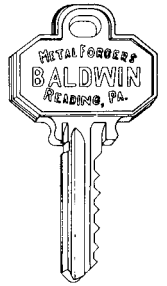
Features: Baldwin 6 pin precision Rim Cylinders are made of solid extruded brass. Finish is applied to cap only. When ordered separately, Cylinders are supplied with 2 nickel silver keys. Tailpiece 8313.329.TPH1 is furnished. C(03) Keyway Cylinders are furnished standard with rim locks unless otherwise specified. Consult price list.

Keying Requirements: Available in a multitude of keying arrangements including Master, Grand Master and Construction Keying Levels.

Cylinder Collar: Cylinder Collars are furnished standard with all keyed rim locks. Cylinder collars shown on page K/11 may be furnished at an additional charge.

Ordering Instructions: Standard Rim Cylinder: Specify item number and finish.

Weight Each: .3 lb. (.14kg)



- No. 1 – 8333.XXX.003 – Cylinder plug. Specify either
US4 or 26D finish.
- No. 2 – 8333.009.007 – Tailpiece Plate
- No. 3 – 8300.509.004 – Mounting Screws for Tailpiece
- No. 4 – 8300.109.005 – Tumbler Springs
- No. 5 – 8300.009.0066 – Spring Covers (6 pin)
- No. 6 – 8320.009.101 – Top Pins (For Bottom Pins #0–#3)
8320.009.102 – Top Pins (For Bottom Pins #4–#6)
8320.009.103 – Top Pins (For Bottom Pins #7–#9)
- No. 7 – 8320.009.202 #2 Master Pins - .0295 (0.749mm)
8320.009.203 #3 Master Pins - .0445 (1.130mm)
8320.009.204 #4 Master Pins - .0595 (1.511mm)
8320.009.205 #5 Master Pins - .0745 (1.892mm)
8320.009.206 #6 Master Pins - .0895 (2.273mm)
8320.009.207 #7 Master Pins - .1045 (2.654mm)
8320.009.208 #8 Master Pins - .1195 (3.035mm)
8320.009.209 #9 Master Pins - .1345 (3.416mm)
- No. 8 – 8320.152.300 #0 Bottom Pins - .1655 (4.204mm)
8320.152.301 #1 Bottom Pins - .1805 (4.585mm)
8320.152.302 #2 Bottom Pins - .1955 (4.966mm)
8320.152.303 #3 Bottom Pins - .2105 (5.347mm)
8320.152.304 #4 Bottom Pins - .2255 (5.728mm)
8320.152.305 #5 Bottom Pins - .2405 (6.109mm)
- Cont. 8320.152.306 #6 Bottom Pins - .2555 (6.489mm)
8320.152.307 #7 Bottom Pins - .2705 (6.871mm)
8320.152.308 #8 Bottom Pins - .2855 (7.252mm)
8320.152.309 #9 Bottom Pins - .3005 (7.633mm)
- No. 9 – 8333.009.010 Spacer
- No. 10 – 8313.329.TPH1 Tailpiece – Horizontal (Regular)
8313.329.TPH2 Tailpiece – Horizontal (Long)
- No. 11 – 8313.509.008 Mounting Plate

- No. 12 – 8313.509.009 Mounting Screws

